

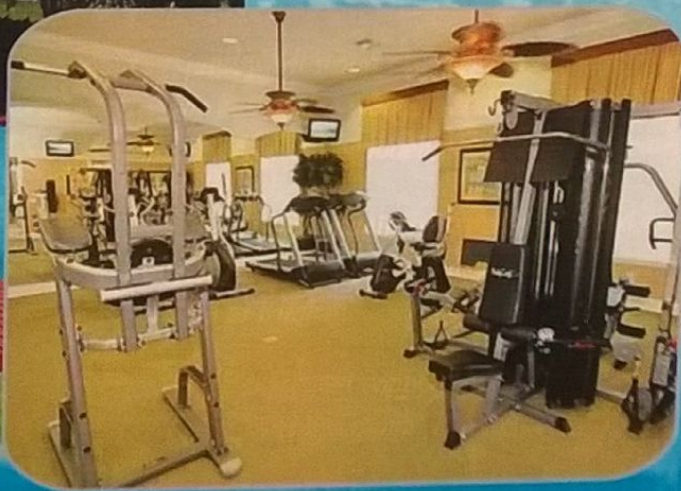
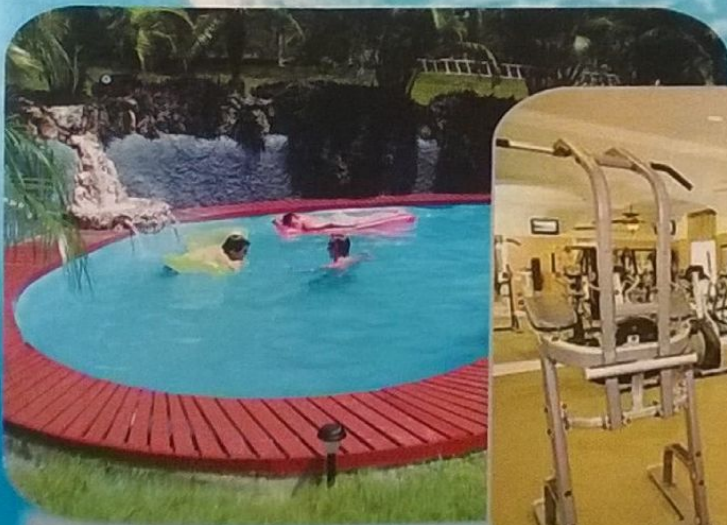


SANITARY & WATER SUPPLY : *Septik Tank with proper sanitation system.
*Water supply from Deep tubewell/U.C. Reservoir to O.H. Reservoir with Pump facility.

FINISHING : * External Weather coat paint over cement Plaster.
* Internal P.O.P finish with Primer coat over Plaster.
* Common area finished with cement based paint with primer coat over plaster.v

Swimming Pool & Club House (Block-C) •

*The ultimate destination of fitness, pleasure comfort and Social contact—“THE CLUB HOUSE”.
The Club House and Swimming Pool is open to all the “Club member” for whole week for a stipulated time period. This destination is only and incomparable comfort zone to all the working people in Cooch Behar. The Club House is well equipped with Club rooms, indoor games, Gym, Bar & Restaurant and Guest house. There are separate dressing rooms with toilet to the Swimmer. Filtered water with proper Ph Balance will give all time pleasure to all the members in the pool. The kids pool are the most well come factor to the children.*





Facilities

The proposed Project is facilitated with adequate open space with roads & garden etc. There is a proposal of a Swimming Pool inside the Project open for the use of Club member. The proposed Project is well situated and well connected to Cooch Behar Town.

The Project contains the following :

- SHOW ROOMS
- RETAIL SHOPS
- OFFICE SPACES
- BANQUET HALL
- 3-SCREEN MULTIPLEX
- FOOD COURT
- BAR & RESTAURANT
- CLUB HOUSE
- RESIDENTIAL APARTMENT
- CAR PARK





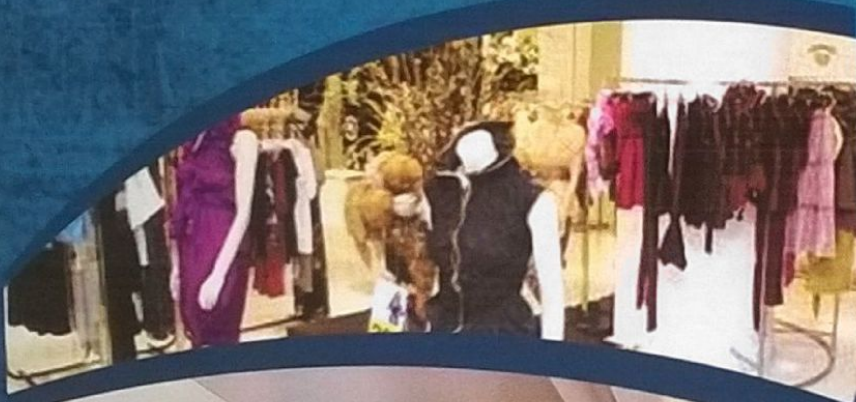
ANCHOR SHOPS (GROUND FLOOR : (BLOCK - A))

The surprise begins the ANCHOR SHOP. Designed to create a one stop shopping experience that will draw fast falls from across the City. You can entire customers with a wide frontage and eminent brand names. Invite them to come and explore the Works of latest tends and fashion. It is simply the super they can get.



AREA OF ANCHOR SHOPS (INCLUSIVE SERVICE)

- ANCHOR - A : 1191 M² (12820 Sft.)
- ANCHOR - B : 194 M² (2088 Sft.)
- ANCHOR - C : 170 M² (1830 Sft.)



 **Retail Show Rooms (FIRST FLOOR) (Block- A)**

Keeping in your mind to mean a Retail Show Room "CITY MALL-COOCH BEHAR". Is that place Planned for the whole family, kit point out to offer choice of shops for every need and occasion. Whether it is groceries or linen for the home, Toys for the kinds, music for the mind & soul, CITY MALL—COOCH BEHAR promises to be the retail destination of choice in COOCH BEHAR. Every show room connected with wide lobby finished with modern flooring.

 **AREA OF SHOW ROOMS (INCLUSIVE SERVICE)**

No. 1	-	243 M ² (2616 Sft.)	No. 6	-	32 M ² (344.5 Sft.)
No. 2	-	56 M ² (603 Sft.)	No. 7	-	83 M ² (893 Sft.)
No. 3	-	145 M ² (1561 Sft.)	No. 8	-	32 M ² (344.5 Sft.)
No. 4	-	55 M ² (592 Sft.)	No. 9	-	83 M ² (893 Sft.)
No. 5	-	142 M ² (1528 Sft.)			

FOOD COURT (1st FLOOR) 498 M² (5360 Sft.)

CONNECTION TO GD. FLOOR 2 Nos. Stair + 2 Nos. Lift + 2 Nos. Escalator



Experience & Enjoy : The Ultimate place of enjoyment here in Cooch Behar. The 3-Screen Multiplex will satisfy you in all respect for enjoyment of watching movie in Top Class environment. The large screen with Luxurious seating arrangement will give you an super experience of watching movie.

*Audi-1 = 390.6 M (4204 Sft.)
Audi-2 = 207.57 M (2234 Sft.)
Audi-1 = 207.57 M (2234 Sft.)*

FOOD COURT (2nd Floor) :- 498 M² (5360 Sft.)

Family Restaurant (3rd. Floor) 498 M² (5360 Sft.)

Connection from Gd. Floor :

Two Nos. of Stair, Two Nos, of Loft and Two nos. of Escalator.





BANQUET HALL (4TH FLOOR) (BLOCK-A)

Cool Reception in 4th floor—The BANQUET for any occasion small or big. The ultimate solution ‘The Banquet’. Well equipped, well furnished, well arranged A.C Banquet Halls are waiting for you to complete your reception and programmes in full satisfactory. There are two nos. of Banquet Hall may be convertible to one, big Banquet and well equipped with separate rooms, separate toile, kitchen, dress and wash. Full power back up arrangement and of course there are separate stair and lift for the Banquets

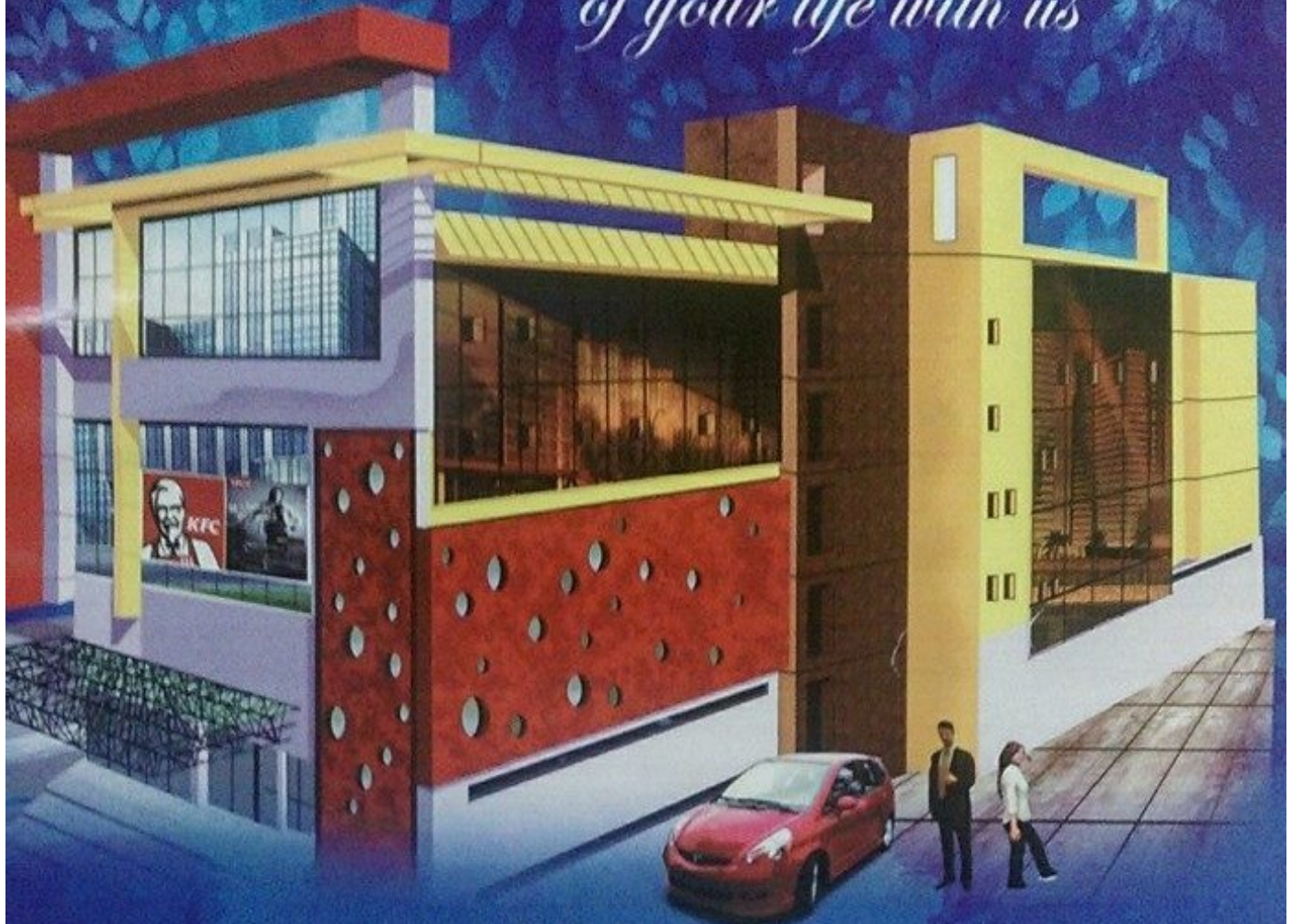
Banquet -1 : 391.5 M² (4214 Sft.)

Banquet -2 : 366.5 M² (3945 Sft.)

BAR & RESTAURANT (4TH FLOOR) : 498 M² (5360 Sft.)



WALK TOWARDS THE
" SUN SHINE DESTINATION"
of your life with us



A Vision From

BANIK ASSOCIATES

City Mall

COOCH BEHAR || WEST BENGAL